



WHĪTAU SCHOOL NEWSLETTER

NEWSLETTER NO 12: Thursday 30th April 2020

**WHĪTAU
SCHOOL**

221 Woodham Road, Christchurch 8062 Phone (03) 389 8112, Mobile 027 758 1467

eMail: office@whitau.school.nz www.whitau.school.nz

Find us on Facebook - <https://www.facebook.com/WhTtauSchool>

KEY DATES - PLEASE KEEP FOR FUTURE REFERENCE!

Next Week	Monday 04 May	Covid-19 Pandemic Level 3 Education continues <ul style="list-style-type: none"> • Our daily 'Learning at Home' programme continues • Bubble 'Learning at School' Groups continue • No families or children are allowed to come into the school grounds to play between 8am and 4pm please
Coming Up	Monday 11 May	Pandemic Level 3 Reviewed

From the Principal's Home....

Kia ora e te Whānau

Now we are learning at Level 3 class teachers are recording daily engagement with their students and families with the online learning activities. Sadly, this is not an educational 'holiday' and our teachers are working incredibly hard. If your child is not involved either online, at the daily Zoom meetings or with the work that is emailed by Seesaw, they are now missing out on valuable learning. Please support your child to read every day, watch some educational TV and enjoy a fun learning activity with you. Thanks so much to you all as parents supporting us in this challenging time. We do not know when school will open so please encourage your child. Try the 'when you have completed a learning activity, then you can.....!' strategy. If you need help please email your child's class teacher. We really value you communicating regularly with us!

Please like WhTtau School on Facebook to read our daily updates!

Celebrating Our Students Learning@Home

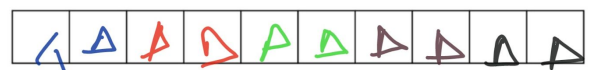
Room 11

Piper Snowdon used a fantastic amount of creativity and perseverance to create a robot which is taller than her! It was an awesome use of recycled goods for our 'robot themed' Writing and Reading activities!

From Mrs Bruce



Create patterns using colors.



Room 4

One of our home learning tasks was to make a reading fort.

Hezekiah made an aeroplane reading fort.



Another of our home learning tasks for Maths was to create a pattern using colours.

This was what Gurnoor did for his pattern.

From Mrs Cox

Room 12 was challenged to write some senses poems to explain their isolation bubble. Each line had to begin with a different one of their 5 senses:

Isolation

Isolation feels grey - it's like a bubble around me.
It tastes like a large raindrop in my mouth.
It smells like the warm summer breeze blowing across my face.
It looks like an empty street - no people walking on the footpath.
It sounds like the sea waves swishing side to side.
It feels stressed but calm.

Michelle

Lockdown

Lockdown is blue, like clear sky.
It tastes like yummy cake baked by mum.
It smells so good because there is no fast food.
It looks like the streets are quiet and everyone is in private.
It sounds like the bounce of the ball and the noise of the vacuum.
It feels like staying safe with my family.

Tanvi

Lockdown

Lockdown is grey and black, like a scary night
it tastes like cinnamon scrolls with ice cream
it smells like sweaty socks
it looks like bike rides on streets with no cars
it sounds like dogs barking
it feels boring jobs and then some fun

Israel

Learning@School Bubble Groups

Level 3 Bubble Group Learning at School for the next two weeks, to support parents leaving home to work, has commenced with a small group of children. We are very grateful for the wonderful support we have received from families for our Learning@Home programme to have such a small number of children onsite.



Bubble Group 1

Supervised by Mr Betts and Mrs Rayne (9am - 12 noon);
Mr Mitchell and Mrs Anderson (12 noon to 3pm)

- 4 students confirmed attending daily for two weeks
- 4 students attending some days for two weeks

Bubble Group 2

Supervised by Miss Schulze and Miss Whyte (9am - 12 noon);
Miss Sasse and Whaea Bristowe (12 noon to 3pm)

- 4 students confirmed attending daily

The roll for the Learning at School Bubble Groups is now closed, unless parents are asked to return to work. These are supervised groups only for students of parents who have to leave their home and return to work at Level 3. The students are supervised to complete their daily Learning at Home tasks, watch educational TV and enjoy their Whītau School activity packs. It is not a normal daily teaching classroom programme and the Teachers and Learning Assistants are not actually 'teaching' the students.

School Roll and Contact Details

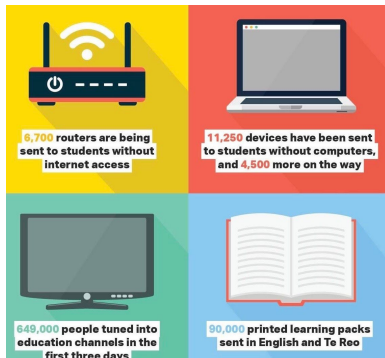
We are worried about the families will have not yet been able to make contact with and whose children are not participating in the Learning@Home programme. We will continue to attempt to make contact next week. If we do not have your correct phone number or correct email address we cannot send you our School Communication. **If you change your email or phone number, please ring or email and give your new details to the School Office, so we can update our School Records.** secretary@whitau.school.nz

WhTtau School Learning Activity Packs

To further support you keeping your children busy learning at home we have created our own WhTtau School Learning Packs which have been available for you to collect yesterday and today from outside the Community Room at the north end of the School Hall in the Rowcliffe Crescent car park. The Junior, Middle and Senior Learning packs have lots of independent activities that you will not need to 'teach' your children and some fun activities to do together too. There was a pack made for every student - all 292 of them!



Ministry of Education Free Modem/Routers and Internet Access, Free Devices or Free Hard Learning Packs



Last Thursday we updated our school's order with the Ministry of Education. We have ordered 129 student devices, with 44% of our students requiring a device; and 171 hard learning packs. **Unfortunately we still do not have any information from the MOE as to when these will be delivered to your home.** The devices will be linked into our school's MOE Asset Register and have to be paid for by the School out of our MOE Operations Grant.

When school reopens at Level 2, it will be compulsory that all these devices are returned to school. The cost of any damage or lost devices will have to be paid for by the family concerned.

Please use the school contacts below between the hours of 8am and 5pm weekdays, below if you require any support for you or your whānau.

Board Chairperson: Alexandra Davids botchair@whitau.school.nz

Principal: Sandra Smith sandra@whitau.school.nz Ph 0272438436

Deputy Principal: Amy Collins amy@whitau.school.nz

SWiS Social Worker in Schools: Shakira van der Lem

Shakira.VanDerLem@standforchildren.org.nz

Mana Ake: Kama Franklin kama@familyhelptrust.org.nz

The Official Government COVID-19 Website and Helpline -

<https://covid19.govt.nz/>

Helpline 0800 24 24 11



Our Wh Ttau School grounds REMAIN CLOSED TO THE PUBLIC during school hours and may not be accessed. ANY VISITORS IN THE SCHOOL GROUNDS BETWEEN 8AM AND 4PM MUST SIGN IN ON THE CONTACT REGISTER

The school playground equipment has been isolated by DANGER TAPE and may NOT be used. Thank you.

Kia kaha. Nga mihi nui

Sandra Smith JP

PRINCIPAL

Our Term 2 Learning at Home Expectations

During Level 3 - While our school community waits for the support from the Ministry of Education with internet and student devices at home and home hard learning pack resources...



Our WhTtau School Learning at Home Approach

We will continue to:

- Use our existing online resources - Mathletics, Sunshine Online and Sunshine Classics
Encourage the use of the educational English and Maori TV channels screened daily between 9am and 3pm
- Value class teachers making contact with ALL families, encouraging learning online by all our students
- Manage the amount of communication between school and home
- Use the KISS (Keep it simple!) principle
- Be respectful that all families, including families of staff, are living in challenging times

Please Note: Teachers will be making regular contact by phone with every child and their family to check on your family wellbeing and support you with your child's home learning.

WhTtau School will continue to use these ways to share learning between home and school:

1. School Google Site for Families

The [School Learning@Home Google Site](#) which has resources and ideas for learning at home. The School Google Site

- Has been shared via Seesaw, Facebook and added to the [School Website](#)
- Has sections for our three Learning Teams - [Kākano](#), [Kārawha](#), [Kōrari](#), where students and families can explore the Digital Learning@Home website, wellbeing resources, digital safety and other supports

2. SeeSaw - Individual Teacher and School Communication with Families

- A daily 'morning message' from each class teacher will be sent to your family between 8am and 9am about the day's learning
- A daily Reading, Writing and Maths activity will be shared on SeeSaw for your child to complete
- Please contact your class teacher via Seesaw or by email for support with learning
- We will communicate with families between 8am and 5pm Monday to Friday. However, to respect the privacy of all families, teachers will not be responding outside these 'school' hours

3. Daily 'Zoom' Class Meetings

- [Zoom](#) is a cloud based app that allows us to meet face to face together online
- Parents will receive an email from the class teacher with a link/invite to join the class meeting
- We understand that some families may not be able to use Zoom. Teachers will follow up those families with a phone call
- Every class teacher will offer a short daily class Zoom 'get together' each day

The class 'Zoom' times have been selected to avoid family clashes with devices

- 9.00am - Kākano & Kehakai classes
- 10.00am - Kārawha classes
- 11.00am - Kōrari classes

