



WHĪTAU SCHOOL NEWSLETTER

NEWSLETTER NO 22: 25 July 2019

**WHĪTAU
SCHOOL**

221 Woodham Road, Christchurch 8062 Phone (03) 389 8112, Mobile 027 758 1467

eMail: office@whitau.school.nz www.whitau.school.nz

Find us on Facebook - <https://www.facebook.com/WhTtauSchool>

*Take care of our children. Take care of what they hear,
Take care of what they see, take care of what they feel.
For how the children grow, so will be the shape of Aotearoa’.*

Dame Whina Cooper

KEY DATES - PLEASE KEEP FOR FUTURE REFERENCE!

This Week	Tomorrow	8.30am St Chad’s Breakfast Club in the Kidsbase Room <i>*Please take time to check the Lost Property in the School Office if you are missing school uniform</i>
Next Week	Wednesday 31 July Friday 2 August	8.30am Te Mapua Breakfast Club in the Kidsbase Room 8.30am St Chad’s Breakfast Club in the Kidsbase Room Sausage Sizzle Lunch \$2 orders to class by 9am
Coming Up	Friday 09 August Monday 19 August Tuesday 20 August Tuesday 27 August Thursday 29 August Tuesday 3 September Friday 13 September	Crazy for KidsCan Day - School Discos - Juniors and Seniors Court Theatre Movement Workshop (Term 3 Activity fee required) Court Theatre Movement Workshop (Term 3 Activity fee required) Court Theatre Movement Workshop (Term 3 Activity fee required) Strike Strum and Blow Festival at the Horncastle Arena (<i>All Ukulele and Recorder Students to attend</i>) 11.15am ‘Taster Day’ Chisnallwood Intermediate (Year 6 only) 12.30pm Cultural Festival 2019 at the Horncastle Arena (<i>Tickets available at Ticketek only</i>)

OUR WEEKLY SCHOOL NEWSLETTER IS ISSUED EVERY THURSDAY. PLEASE READ IT!

Whakatauki of the Week:

‘Whāia te kahurangi ki te tūohu koe me he maunga teitei’ -

‘Seek the treasure you value most dearly: if you bow your head, let it be to a lofty mountain’



Principal: Sandra Smith, JP

principal@whitau.school.nz

Board of Trustees Chairperson: Alexandra Davids

botchair@whitau.school.nz

We value Being Respectful, Being Responsible and Being a Learner

From the Acting Principal's Desk

Dear Parents, Carers and Friends of Whīttau School

Kia ora koutou katoa! Talofa lava! Māiōe lelei! Greetings everyone!

Welcome back to Term 3! We hope everyone had a wonderful and refreshing break. This term looks very exciting! Each class are learning about a myth or legend in detail and then retelling it through a Wearable Arts performance which whānau will be invited to. This learning will underpin everything we do. Students will read about the legend, write about the legend, create art works inspired by the legend, learn about where it comes from, retell the story through drama and participate and create other fantastic learning experiences. Watch this space!

New Staff

This week we warmly welcomed Mrs Gail Turner to Whīttau School. Mrs Turner will be teaching in Te Kuru Waka with Mrs Maria-Soosai and she will be responsible for teaching our newest learners to Whīttau School. Mrs Turner has previously been a Guest Teacher in our school and enjoyed her time with us.

Fruit Trees

We are feeling very sad that a member of the public has come on to our school grounds and stolen our fruit trees that we planted in 2018. We were looking forward to seeing the fruit that grow on them that we could share. Leaving the school grounds with several trees would not be easy, if you know anything about these missing trees, please come and see myself or Sandra so we can follow this up.

Viruses and Bugs

There are lots of nasty viruses and bugs about at the moment. If your child is unwell, please keep them at home until they are feeling better. If they are unwell with vomiting or diarrhea they need to have stopped for at least 24 hours before returning to school. We want everyone at school healthy and well please.



PMP - Perceptual Motor Programme

This term we are running this programme for Rooms 1, 2 and 3 and we need some more parent helpers to support this programme so it can happen. PMP is a programme designed for junior students that helps develop physical fitness, hand and eye coordination, movement skills and memory. You don't have to be one of these classes parents, you may have some spare time and would love to help school out or you may have whānau who can help Nana or Grandad. Please come and see the Office if you are able to help.

Kidscan Jackets

Since returning to school the weather has been damp and cold. We endeavour to get our students out at break time whenever possible to get some fresh air. Please ensure that your child has their KidsCan jacket at school with them each day in case it is needed.

Attendance and Lateness

Research has shown that for learners to have success at school they need to be present at school. Sustained absence affects educational achievement and can lead to significantly diminished opportunities later in life. As a school we continue to monitor attendance and lateness to ensure that you are informed of the amount of school your child has missed. Over the next week attendance letters will be coming home for any students whose attendance has dropped to 90% or below. If you need help or support with your child coming to school, please come and see us so we can support and empower you.

A very warm welcome to Whīttau School.....

We warmly welcome the following new students who have enrolled at our school. We trust you and your whānau will find our school an awesome, caring school where you will be 'learning to take us places...!' **TKW Rua: Te Kowhairangi Kaimate, Luekan Kennedy, Evie McGregor, Zhairus Manawatu, Rose Smith, Gurnoor Virk**
Room 10: Alizai Elisara

Kind regards everyone

Amy Collins - Acting Principal - Tumuaki

Gold Awards Learning Celebration for July

The following wonderful children deserve special congratulations for being chosen as our Gold Award students for July. They received their Gold Awards certificates and badges at our Gold Award Learning Celebration on the last day of Term Two. Their teacher and class recognize them as being 'as good as gold'. They have displayed consistently excellent behaviour, attitude and work both in the classroom and in the playground. You can wear your badges with pride children! Thank you to the whanau who joined us for the celebration.

Hazel-Lee Linstead	TKW	Naeema Ali	Room 6
Rayyan Ali	Room 1	Tanvi Naidu	Room 7
Ayanna Shire	Room 2	Samantha Keele	Room 8
Ataahua Masiu	Room 3	Siavao Manuleleua	Room 9
Sophia Fesway	Room 4	Zoe Tenorio	Room 10
Ysabel Boese	Room 5	Zoe Glintmeyer	Room 11

Healthy Eater Award

Salma Yasin, Room 2 Novalea Thorn, Room 5 Peyton Mihaere, Room 8

Caught Being Good, Caught Being Active

Christian Tuima, Room 3 Hyacint Famitangco, Room 6

Road Patrol

Sam Fifita, Room 10

School Newsletter Draw

James Daligdig	TKW	Tyler Williams	Room 6
Te Ariki Paki-Otene	Room 1	Amelia Campbell	Room 7
April Nevard	Room 2	Alexis Gregory	Room 8
Eli Sia	Room 3	Veronica Stan	Room 9
Sophia Fesway	Room 4	Ava Yazdanpanah	Room 10
Avea Masaga	Room 5	Micheal Hotter	Room 11

Parent Draw

Congratulations to Dave Campbell, Tracy Glintmeyer, Romita Lata and Craig Masiu



Mathletics Results from Week 10

At Whītau School, the Board of Trustees fund Mathletics for each child to access online in class and at home. This means that learning can be ubiquitous as learning can happen at home, at school or anywhere.

If your child does not have access to Mathletics, please see your child's teacher for their login details.

The top Mathletics Classes were:

Kākano: Room 3
Karawha: Room 7
Kōrari: Room 10

The top Mathletics students were:

Kākano: Sadore Alemeneh (Room 3)
Karawha: Tāne Norton (Room 5)
Kōrari: Elshadaye Alemeneh (Room 10)

Positive Behaviour for Learning Schoolwide: PB4L-SW@LNS – Week 1

This week our focus is: ***Be a Learner - Try new things***



What does this look like at home?

- ⇒ Recognise what holds us back
- ⇒ Create new positive habits
- ⇒ Try to embrace things when they get tricky

Taha Maori Focus

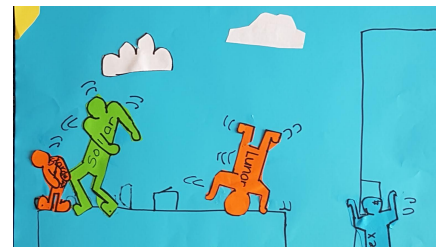
Each week we have Maori phrases which we try to incorporate into our daily teaching and learning.

He aha hei tina māu, e te tau? What would you like for lunch, my darling?

News from Room 9 and Mr Mitchell

We have really hit the ground running this term. Our reading and writing groups are focused on the features of non-fiction text and how these differ from fictional stories. We also have a pen-pal class at Selwyn Ridge School in Tauranga. We were very excited to read letters from them this week and have begun our replies. In Maths we are learning about ordering, adding and converting fractions. In Art we have been studying an American modern artist called Keith Haring. We have used his techniques to show bold colour and movement in static images.

Thanks for the great comments on Seesaw, our students really appreciate your interest in their learning.



News from Kōkari Team and Mr Wood

What a great start to the term we've had. The students have settled down into their learning and are back into routine so quickly. We are so excited about our learning this term. Our integrated art focus this term is wearable arts. Each class is focusing on a myth and legend and using that story to influence the design of their garments. We have a visit to the Court Theatre to see 'Le Malaga Fa'a'Atua -The Journey of the Gods' later on in the term. It is an important term for our Kapahaka and Pasifika groups as we will be performing at the Christchurch Cultural Festival on the 13th of September. We are certainly living our motto 'learning to take us places'.

Download our School App this winter

Simple free download: In Google Play and App Store search 'Skool Loop' and choose our school once installed.

✓ Cancellations ✓ Events ✓ Notices ✓ Instant notifications
✓ Absentees ✓ Newsletters ✓ Permission slips

SKOOL LOOP

Available on the Google play
Available on the App Store

WEEKLY SCHOOL NEWSLETTER RETURN SLIP: Newsletter No 22



WHĪTAU
SCHOOL

Please sign and ask your child to return this section to their class teacher on Friday morning. There will be a class weekly treat for the class who has the most returns. Your child will receive 5 house points and enter their slip in the class box for their class lucky book draw at our monthly Gold Awards Learning Celebration.

I have received and read the Whītau Newsletter 22

Student's Name: _____ Room: _____ Signed: _____

Comments:

