



# WHĪTAU SCHOOL NEWSLETTER

NEWSLETTER NO 10: Thursday 24 April 2020

**WHĪTAU  
SCHOOL**

221 Woodham Road, Christchurch 8062 Phone (03) 389 8112, Mobile 027 758 1467

eMail: [office@whitau.school.nz](mailto:office@whitau.school.nz) [www.whitau.school.nz](http://www.whitau.school.nz)

Find us on Facebook - <https://www.facebook.com/WhitauSchool>

## KEY DATES - PLEASE KEEP FOR FUTURE REFERENCE!

<b>Next Week</b>	Monday 27 April Tuesday 28 April  Wednesday 29 April	<b>ANZAC Day Public Holiday due to Mondayisation</b> <b>Teacher Only Day. NO HOME LEARNING</b> Staff will be onsite at various times, social distancing applies. <b>Level 3 Education begins</b> <ul style="list-style-type: none"> <li>• Our daily 'Learning at Home' programme continues</li> <li>• Bubble 'Learning at School' Group commences</li> <li>• <b>No families or children allowed to come into the school grounds to play between 8am and 4pm please</b></li> </ul>
<b>Coming Up</b>	Monday 11 May	<b>Pandemic Level 3 Reviewed</b>

### From the Principal's Home....

#### Kia ora e te Whānau

It has been a very busy week for our leadership team and teaching staff as we prepare for learning at Level 3. Tremendous thanks for your support in completing the two surveys for the information we required to update to the Ministry of Education.

#### School Roll and Contact Details

**We have 292 students on our school roll currently living in 226 families.**

**As at 5pm yesterday, through a huge effort, we have been able to make contact with 215 of our families.**

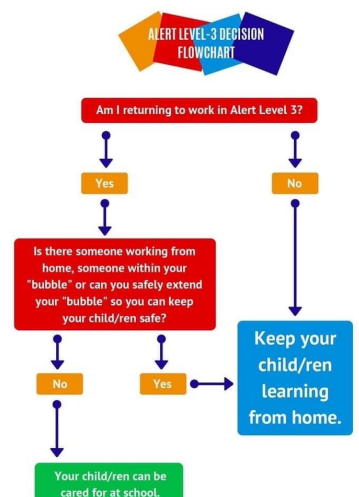
Sadly we have 11 families with 17 children in total that we have not been able to make contact with by phone, school text, email or through SeeSaw. We are worried about those families and will continue to attempt to make contact next week. We discovered that many addresses and phone numbers had changed and details had not been updated with the School Office which has made contacting some families very challenging! If we do not have your correct phone number or correct email address we cannot send you our School Communication.

#### Bubble Group Learning at School for the next two weeks for parents leaving home to work

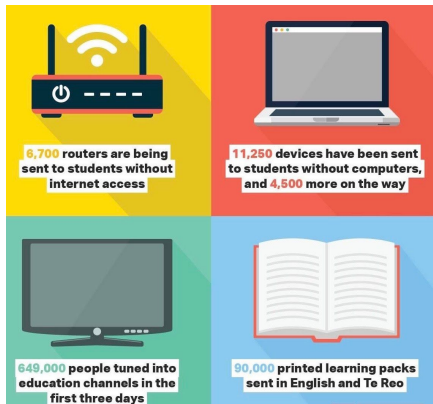
At 5pm yesterday, we had

- 6 students confirmed attending for two weeks
- 3 more students confirmed attending in week two
- 10 more students, whose parents

**The Learning at School Bubble Group roll is now closed.**



## Ministry of Education Free Modem/Routers and Internet Access, Free Devices or Free Hard Learning Packs



From the two surveys completed this week we have been able to update our school's order with the Ministry of Education. We have ordered 129 student devices, with 44% of our students requiring a device; and 171 hard learning packs.

The devices will be linked into our school's MOE Asset Register and have to be paid for by the School out of our MOE Operations Grant.

**When school reopens at Level 3, it will be compulsory that all devices are returned to school. The cost of any damage or lost devices will have to be paid for by the family concerned.**

### Positive Feedback from our School Community

I am very proud and grateful of how hard the Whātau Staff are working to ensure that they are meeting the needs of our learners through learning@home and providing support as necessary. We have loved hearing the positive feedback that has come through the surveys, emails and Facebook. We will make sure this is shared with our teachers! Thank you whānau for your kind words during stressful times, they fill our buckets!

**Here are some of the lovely messages that we wanted to share:**

*'The teachers and management team have done a fantastic job during this time! No it's not easy with a 5 year old who learns differently but we adapt and make it work..thank you for your support!'*

*'You are all doing a fantastic job!'*

*'Thanks for the fabulous communication and work put in behind the scenes. It is truly appreciated.'*

*'Hope you are all keeping well and safe.'*

*'We are so impressed with Miss Ristow. We love how she's making sure the children (and families) are doing ok mentally as well as coping with home learning.'*

*'Thank you so much for all you are doing to keep our kids learning up.'*

*'Thank you for updates during lockdown and for the boys teachers sending me daily tasks via text message for them to complete as if they were at school.'*

*'Stay safe'*

*'Thank you for looking after whānau during this time.'*

*'Thank you very much for all that you do for us and our kids. Stay blessed.'*

*'Thank you to the school for doing an awesome job.'*

*'My child is enjoying his online work.'*

*'The teachers and class activities via Seesaw have been amazing, cannot fault your junior teaching teams enthusiasm at all!'*

*'Jay is enjoying doing his school work on- line thanks to his great teacher Mr Mitchell.'*

*'Love and appreciate your work Sandra and all your staff. Thank you on behalf of my grandchildren.'*

*'Thank you for all your support and communication. All of the staff have been amazing and the expectations realistic!'*

*'Thank you to our kaiako... it means so much for our tamariki to connect with their teachers and fellow students. We appreciate the hard work being done behind the scenes.'*

*'Thanks to all the staff who are juggling the continued learning for our kids while still juggling their own home lives. I am finding the workload for the kids really manageable, and most importantly they are enjoying it. Thanks everyone for the great support.'*

*'Thank you to all the teachers that have been working on all the learning that is coming up and all the great ideas for the kids. My girls are super keen to get into their work but it will be a juggle, with still being super busy working myself but looking forward to giving it a good go.'*

*'Just wanted to send a huge thank you to all of the teachers and also you and Sandra. Your contact and communication has been beyond amazing and the work that is being set out each day is clear and easy to follow. The fact that not too much pressure is being put on it really is amazing. This is such uncharted territory and I truly believe that Whītau is leading the way. Thanks again '*

*'You guys are awesome and thank you for all your support and constant care for the Whītau school family. Take care'*

*'THANK YOU ALL SO MUCH FOR EVERYTHING YOU ARE DOING BEHIND THE SCENES TO MAKE EVERYTHING WORK TOGETHER AS SMOOTHLY AND EFFICIENTLY AS POSSIBLE FOR OUR TAMARIKI AND WHANAU OF WHĪTAU SCHOOL.... WE APPRECIATE YOU ALL.... LORD BLESS YOU ALL AND YOUR WHANAU IN JESUS WONDERFUL NAME..... THANK YOU THANK YOU THANK YOU'*

*'Thank you Sandra for the update! You guys are doing an awesome job and have done so from the beginning...it's been a massive job for you all trying to balance work and getting our children's home learning done everyday we applaud your hard work and dedication '*

*'Thanks heaps, you guys are doing an amazing job loving the amount of support. And both my boys absolutely look forward to the zoom meetings.'*

*'Well done Whītau school keep up the great work keep safe '*

*'Thank you for that Sandra. Rome is very excited to be able to partake back into learning as we have only been able to do very little at home with no resources and we were concerned about his learning as he was off school the week prior to lockdown after our doctor advising us due to him being asthmatic. I am very grateful for your help and response and feel a lot more at ease with his learning. Thank you Sandra '*

Please use the school contacts below between the hours of 8am and 5pm weekdays, below if you require any support for you or your whānau.

Board Chairperson: Alexandra Davids [botchair@whitau.school.nz](mailto:botchair@whitau.school.nz)

Principal: Sandra Smith [sandra@whitau.school.nz](mailto:sandra@whitau.school.nz) 0272438436

Deputy Principal: Amy Collins [amy@whitau.school.nz](mailto:amy@whitau.school.nz)

SWiS Social Worker in Schools: Shakira van der Lem [Shakira.VanDerLem@standforchildren.org.nz](mailto:Shakira.VanDerLem@standforchildren.org.nz)

Mana Ake: Kama Franklin [kama@familyhelptrust.org.nz](mailto:kama@familyhelptrust.org.nz)

The Official Government COVID-19 Website and Helpline - <https://covid19.govt.nz/>

Helpline 0800 24 24 11

***Our Whītau School grounds and buildings REMAIN CLOSED TO THE PUBLIC  
by the Ministry of Education and may not be accessed.***

***The school playground equipment has been isolated by DANGER TAPE may NOT be used. Thank you.***

Kia kaha. Nga mihi nui

Sandra Smith JP

**PRINCIPAL**



## Our Term 2 Learning at Home Expectations

*During Level 3 - While our school community waits for the support from the Ministry of Education with internet and student devices at home and home hard learning pack resources...*

## Our Whītau School Learning at Home Approach

### We will continue to

- Use our existing online resources - Mathletics, Sunshine Online and Sunshine Classics  
Encourage the use of the educational English and Maori TV channels screened daily between 9am and 3pm
- Value class teachers making contact with ALL families, encouraging learning online by all our students
- Manage the amount of communication between school and home
- Use the KISS (Keep it simple!) principle
- Be respectful that all families, including families of staff, are living in challenging times

*Please Note: Teachers will be making regular contact by phone with every child and their family to check on your family wellbeing and support you with your child's home learning.*

Whītau School will continue to use these ways to share learning between home and school:

### 1. School Google Site for Families

The [School Learning@Home Google Site](#) which has resources and ideas for learning at home.

The School Google Site

- Has been shared via Seesaw, Facebook and added to the [School Website](#).
- Has sections for our three Learning Teams - [Kākano](#), [Kārawha](#), [Kōrari](#), where students and families can explore into the Digital Learning @ Home website, wellbeing resources, digital safety and other supports.

### 2. SeeSaw - Individual Teacher and School Communication with Families

- **A daily 'morning message' from each class teacher will be sent to your family between 8am and 9am about the day's learning**
- **A daily Reading, Writing and Maths activity will be shared on SeeSaw for your child to complete**
- Please contact your class teacher via Seesaw or by email for support with learning.
- We will communicate with families between 8am and 5pm Monday to Friday. However, to respect the privacy of all families, teachers will not be responding outside these 'school' hours.

### **3. Daily 'Zoom' Class Meetings**

- **[Zoom](#)** is a cloud based app that allows us to meet face to face together online.
- Parents will receive an email from the class teacher with a link/invite to join to join the class meeting
- We understand that some families may not be able to use Zoom. Teachers will follow up those families with a phone call.
- **Every class teacher will offer a short daily class Zoom 'get together' each day.**

The class 'Zoom' times have been selected to avoid family clashes with devices.

- **9.00 am - Kākano & Kehakai classes**
- **10.00am - Kārawha classes**
- **11.00am - Kōrari classes**