



**WHĪTAU
SCHOOL**

WHĪTAU SCHOOL NEWSLETTER

NEWSLETTER NO 32: 17 October 2019

221 Woodham Road, Christchurch 8062 Phone (03) 389 8112, Mobile 027 758 1467

eMail: office@whitau.school.nz www.whitau.school.nz

Find us on Facebook - <https://www.facebook.com/WhitauSchool>

*Take care of our children. Take care of what they hear,
Take care of what they see, take care of what they feel.
For how the children grow, so will be the shape of Aotearoa'.*

Dame Whina Cooper

KEY DATES - PLEASE KEEP FOR FUTURE REFERENCE!

This Week	Tomorrow	8.30am St Chad's Breakfast Club in the Kidsbase Room
Next Week	Monday 21 - Friday 25 October Wednesday 23 October Friday 25 October	Aquagym Swimming: Week 2 8.30am Te Mapua Breakfast Club in the Kidsbase Room 8.30am St Chad's Breakfast Club in the Kidsbase Room Sausage Sizzle Lunch \$2.00
Coming Up	Monday 28 October Thursday 31 October Monday 4 November Wednesday 6 November Friday 8 November Wednesday 13 November Thursday 14 November Friday 15 November Friday 22 November November - various dates Friday 6 December Wednesday 11 December Thursday 12 December	Labour Day (School Closed) Athletics Day for Year 4-6 students (postponement day 5 November) Halloween School Discos Heritage School Photos (Class & Individual) School Choir Christchurch Schools Music Festival <i>Tickets \$10 only available from Ticketek</i> 9am Gold Awards Learning Celebration Junior Athletics day Whole School Trip to Big Bang Concert - Town Hall Whole School Trip to the Christchurch Agricultural Show Canterbury Anniversary Day (School Closed) Optional Trip to Royal NZ Ballet - Hansel and Gretel EOTC Team Trips to Quail Island \$30 per child to attend Year 6 Leaver's Day Celebrations School Prizegiving and final day of Term 4 School closes for 2019

OUR WEEKLY SCHOOL NEWSLETTER IS ISSUED EVERY THURSDAY. PLEASE READ IT!

SHARP.

Whakatauki of the Week:
'Whaowhia te kete mātauranga'
'Fill the basket of knowledge'



Principal: Sandra Smith, JP

principal@whitau.school.nz

Board of Trustees Chairperson: Alexandra Davids

botchair@whitau.school.nz

We value Being Respectful, Being Responsible and Being a Learner

From the Principal's Desk

Dear Parents, Carers and Friends of Whītau School

Kia ora koutou katoa! Talofa lava! Mālō e lelei! Greetings everyone!

A very warm welcome back to Term 4 and nine busy weeks of learning and celebrations.



2020 Student Costs

As our Board Chair, Alexandra Davids informed us in the last newsletter, that the BOT have opted into the government's scheme of \$150 funding per student for 2020. This decision was not an easy one for the Board but has been made by considering the following factors:

- We are a Decile 2 school and our families deserve all the financial support they can have
- Many of our students are currently missing out on participating in core curriculum activities and swimming at Aquagym as parents are not paying for them
- All children will be able to participate in the School Aquagym Swimming programme
- The BOT are still able to ask for an annual contribution per child to be paid, which is currently \$40.00 per child, \$10 per term. This contribution will be very important for the Board to continue to provide the very best opportunities for all our students in 2020.
- We are still able to offer activities and trips that are extracurricular which parents can opt in to and pay for their children to attend e.g. to the orchestra, ballet, concerts etc

Current Challenges

- The \$150 will only fund one \$10 activity (trip or performance) per term and two weeks Aquagym swimming (instruction and bus travel) per child per year
- *Parents will still be required to pay for their student's stationery.* This cost will increase in 2020 as it has remained the same for the last five years and been heavily subsidised by the BOT
- Year 5/6 camps and our annual whole school EOTC Day activities, this year to Quail Island, will not be able to occur as the Board will not be able to fund these from the \$150 donation.

I have enclosed a fact sheet from the Ministry of Education with this newsletter. Please share your ideas and opinions to our Board Chair or myself by email or below in our Newsletter Returns. It is the Board's hope that all our families will continue to support our school to provide all the additional support we give our learners that is not core curriculum - such as Athletics, Books in Homes, Sunhats, Our Kids Edible Garden - by contributing for stationery and the family contribution. Our Executive Officer, Megan Palmer is happy to answer any questions you may have as to your current balance and automatic payments.

Summer Uniform

All students are expected to wear the compulsory summer uniform in Term 4. Boys - black shorts. Girls - green and white gingham dresses or culottes. All students require black or white socks and black shoes or sandals please. *Please note that even though our Spring weather is unpredictable, our classrooms are warm and girls do not require black leggings or track pants under their summer uniforms.*

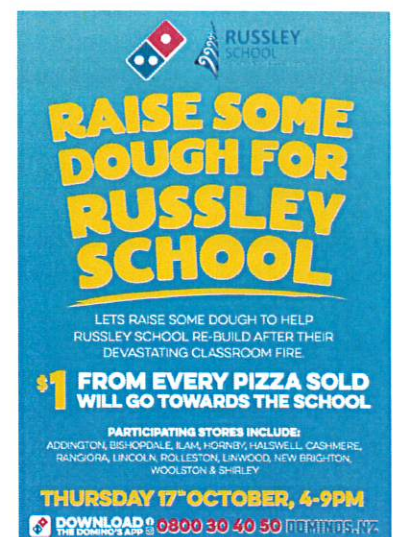
A very warm welcome to Whītau School.....

We warmly welcome the following new students who have enrolled at our school. We trust you and your whānau will find our school an awesome, caring school where you will be 'learning to take us places...!'

TKW Rua: Nicole Amaral Da Mota, Piripi Edmonds, Billie Elsworth, Michelle Masaga, Laylah Shannon-Hoare Room 6: Ira Sharma Room 7: Gary Tata-Kimura

Kind regards everyone

Sandra Smith, JP. Principal - Tumuaki



Term 4 2019 Learning Experiences and Payments



TERM 4 ACTIVITY FEE - \$10.00

This term our focus is on Celebrations - Whaka Nui and our learning is focused on celebrating our learning this year, celebrating who we are and where we live.

As part of this learning, the whole school will be attending the Christchurch A & P Show on **Thursday 14th November** to celebrate being a Cantabrian. This is a fabulous opportunity for our students to learn about this special show and see the animals. We will require parent help with this and a notice requesting this will come home at a later date.

For students to attend this learning opportunity their Term 4 \$10.00 Activity Fee needs to be paid. Please note that the BOT are subsidising the Term 4 Learning Activity event.

QUAIL ISLAND - EOTC FEE

This year each Learning Team will be visiting Quail Island to learn about this special place in Canterbury. Each team will go on a different day and parent help will be needed. Students will travel by bus to Lyttelton, then by Ferry to Quail Island. At Quail Island, students will explore the environment and learn about the history of the island.

For students to attend this learning experience their EOTC fee of \$30.00 will need to be paid. Please note that \$5.00 of this EOTC Fee will also go to the Big Bang Concert bus fare.

A notice will go home closer to the time asking for parent help. Due to tide times, the students will be required to be at school earlier on these days.

Teams/ Rooms:	Date:	Time students need to be at School:	Time leaving school on the bus:
Kākano	19/11/19	8.15am	8.30am
Kārawha	20/11/19	8.15am	8.30am
Kōrari - R8 and R9	26/11/19	8.15am	8.30am
Kōrari - R10 and R11	27/11/19	8.15am	8.30am

BIG BANG CONCERT - \$5.00 - PAID FROM EOTC FEE

The Christchurch Symphony Orchestra is delighted to invite our students to join them for a fun and interactive Big Bang concert in the Christchurch Town Hall on **Wednesday 13th November**.

This a wonderful cultural opportunity for our tamariki. The vibrant and entertaining performance with full orchestra is a great way to introduce students to the world of live music. Students will have the chance to explore ideas of melody, rhythm and tone through listening to a range of music from greats such as Tchaikovsky, Dvořák and Mussorgsky, plus popular hits from Star Wars, Harry Potter and Frozen. Emcee Daisy Lavea-Limo, NZ Grand Slam Poetry champion, will lead the audience through this musical Voyage of Discovery.

The Big Bang Concert is free to attend but there is a cost for transport which will be covered by the EOTC fee. For your child to attend, their EOTC Fee needs to be paid.

Gold Awards Learning Celebration for September

The following wonderful children deserve special congratulations for being chosen as our Gold Award students for September. They received their Gold Awards certificates and badges at our Gold Award Learning Celebration on the last day of Term Three. Their teacher and class recognize them as being 'as good as gold'. They have displayed consistently excellent behaviour, attitude and work both in the classroom and in the playground. You can wear your badges with pride children! Thank you to the whanau who joined us for the celebration.

Jade Allan	TKW	Josiah Pitama	Room 6
Female Student	TKW Rua	Emily Ramsay	Room 7
Seth Taitako	Room 1	Isaiah Ramsay	Room 8
Annabel Elliott	Room 2	Salote Tumia	Room 9
Sadore Alemeneh	Room 3	Lucas Doherty	Room 10
Anna Kumar	Room 4	Alazne Ioane	Room 11
Riley Smith	Room 5		

Road Patrol Joshua McKenzie

School Newsletter Draw

Nash Kippenberger	TKW	Sophie McKenzie	Room 6
Max D-R	TKW Rua	Aashrika Dahal	Room 7
Addison A-N	Room 1	Sapphire L-S	Room 8
Giovanni Hardy	Room 2	Monet S-E	Room 9
Jayde Jewitt	Room 3	Mataio I-T	Room 10
Ryan Mcnicoll	Room 4	Micheal Hotter	Room 11
Tāne Norton	Room 5		

Healthy Eater Award

Hunter Swainson , Room 3 Tanvi Naidu, Room 7 Framie Fesway , Room 10

Caught Being Good, Caught Being Active Awards

Ataahua Masiu , Room 3 Peyton Mihare, Room 9

Parent Draw

Congratulations to Magda de Waal, Tepora Manuel, Michelle Pitama, Louise Richards

Whātau School Parent Questionnaire

Congratulations to the family of Sadore and Elshadaye Alemeneh for winning the \$50.00 Grocery Voucher

Term 3 BOT Raffle Winners

Congratulations to our prize winners and our sincere thanks to everyone who purchased tickets. We sold all 500 tickets and so we made a profit of \$325 towards the planting of our new School Gardens.

	1st Prize \$20	2nd Prize \$10	3rd Prize \$5
Raffle 1	Tepora Manuel	Aley Young	Nicki Cosgrove
Raffle 2	Robert Woodward	Paula Maat	Sue Maat
Raffle 3	Sia Ioane	Andy Chick	Stephen Wood
Raffle 4	Madi Flint	Honey	Toshi Owen
Raffle 5	AJ White	Tara Saul	Rachel Bennett

Taha Maori Focus

Each week we have Maori phrases which we try to incorporate into our daily teaching and learning.

He tino pai tō kōrero - What you have said is very good

He tino pai tō pikitia- Your picture is great

Positive Behaviour for Learning Schoolwide: PB4L-SW@LNS – Week 1



This week our focus is: **Be a Learner: Find and use experts to support your learning**

What does this look like at home?

⇒ Ask for help when you need it

⇒ Know who can help you

Mathletics Results from Week 10

The top Mathletics Classes were:

Kākano: Room 2
Karawha: Room 7
Kōrari: Room 10

The top Mathletics students were:

Kākano: Maia Hiku (Room 2)
Karawha: Lourdaz Timo (Room 7)
Kōrari: Molly Aumua (Room 9)

News from the Kākano Team and Miss Collins

This term we have welcomed a group of new entrant students in Te Kuru Waka. This week I have been lucky to spend some time with our newest tamariki. They are loving school and enjoying their swimming lessons. It has been lovely to see new friendships being built and seeing old friends reconnecting.

This year we have had 68 children start in Kākano and I am so proud of how well these students have started and settled into school and how our teachers have transitioned these students into Whītau School.

If you know of any five year olds in our school zone who are intending on coming to Whītau School in 2020, please encourage them to come and enrol asap.



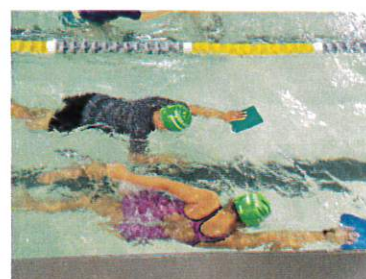
News from Room 6 and Miss Leonard

Room 6 were very proud of their wonderful Wearable Arts performance in the last week of Term 3. We put a lot of time and effort into creating our outfits and learning our song and dance. It was great to see so many people step up and excel in the Arts.



Room 6 have had a great start to Term 4 and are looking forward to what is coming up. We've been busy with Aquagym and it is fantastic to see progress being built on from Term 2. Water safety is very important in New Zealand, and the positive, can-do attitudes of the class have been impressive.

The rest of our first week has been centred around getting back into our usual structures and routines. Our Inquiry focus for this term is Celebrations and we can't wait for all of the celebrations coming up - Deepawali/Diwali, the Rugby World Cup and the A&P show to name a few! We're very excited for what this term is going to bring.



WEEKLY SCHOOL NEWSLETTER RETURN SLIP: Newsletter No 32

Please sign and ask your child to return this section to their class teacher on Friday morning. There will be a class weekly treat for the class who has the most returns. Your child will receive 5 house points and enter their slip in the class box for their class lucky book draw at our monthly Gold Awards Learning Celebration.

I have received and read the Whītau Newsletter 32

Student's Name: _____ Room: _____ Signed: _____

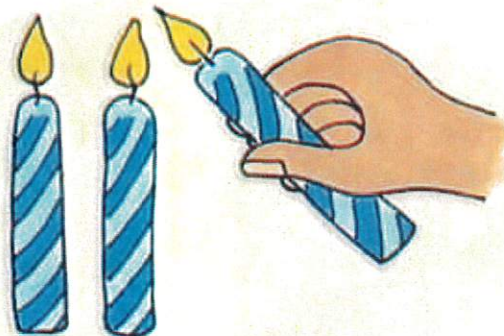
Please share your questions or comments about the government's \$150 donation per student in 2020...

RETHINKING POWER NEEDS

@kwiens62



Power is not like a Remote control where only one person has all the power and control.



Power is like a candle. You can give a child power without giving away any of your own power.



You don't have a set amount of power - like a bucketful. There are ways to give a child power without losing any of your own.

KIDS DON'T WANT YOUR POWER. THEY WANT THEIR OWN.

RICHARD LAVOIE



When a student feels they have

POWER WITH
THE ADULTS
AS WELL AS

POWER WITHIN
THEMSELVES

THEY'LL HAVE LESS NEED TO SEEK

POWER OVER
OTHERS

A new understanding of power can help with this



**"SEE A CHILD
DIFFERENTLY...
SEE A DIFFERENT
CHILD"**

STUART SHANKER



6 WAYS TO HELP KIDS MEET THEIR POWER NEEDS

1. OFFER CHOICE, NOT ORDERS
2. GIVE RESPONSIBILITY
3. START WITH STRENGTHS
4. EXPRESS INTEREST RATHER THAN PRAISE
5. ASK FOR THEIR OPINION
6. ASK FOR THEIR HELP



6 POINTS TO REMEMBER

1. AVOID POWER STRUGGLES
2. AVOID MAKING THREATS
3. GROWING POWER NEEDS ARE A HEALTHY PART OF CHILD DEVELOPMENT
4. RESPECT BOUNDARIES
5. THE RULES (NOT THE ADULT) SHOULD BE OBEYED
6. REFLECT ON YOUR OWN NEED FOR POWER & CONTROL

"THE REALITY IS THAT NO ONE WINS A POWER STRUGGLE" ROSS GREENE

What families/whānau need to know about school/kura donations

- 1** If your child attends a **decile 1 to 7 school or kura**, the school board of trustees **needs to decide whether it should opt in or not** to the Government's new school donations scheme.
- 2** The Government will pay your school or kura \$150 per student per year if the school board agrees to opt in to the scheme **AND** to not ask you for any donations (gifts/koha), except for overnight camps.
- 3** You can ask to attend the board meeting where they will discuss whether to opt in or not.

School/kura donations schemes

1 If your school/kura opts in to the donations scheme:

- The board of trustees cannot ask you to make a donation **unless** it is for an overnight **school/kura camp** – and then you can **choose** if you **want** to pay none, some or all of the donation. If you choose not to make a donation, your child cannot be stopped from attending a camp if it is part of the school's core learning programme (curriculum).
- You cannot be asked to make either a general or specific donation e.g. a donation for a day trip to a museum or a field trip to a hiking track.

2 If your school/kura doesn't opt in to the donations scheme:

- They will not receive additional funding, so they can ask you to make a donation.
- You can be asked to make either a general or specific donation (e.g. a donation for a day trip to a museum or a field trip to a hiking track). Donations are voluntary, and so you can **choose** if you **want** to pay none, some or all of the donation. If you choose not to make a donation, your child cannot be stopped from attending a camp or field trip if it is part of the core learning programme (curriculum).



Information for all parents/caregivers/whānau whether your school/kura is in the donations scheme or not

- Your school or kura cannot charge you for anything involved in the core learning programme (curriculum), including "subject fees."
- Your school or kura can ask you to pay for goods they provide that are optional (for example pens, lunches) but it is up to you whether you buy them from the school/kura or elsewhere.
- If the school or kura has a uniform, you need to provide your child with one but you can choose to buy it from the school/kura or, if available, to buy a new or second hand uniform elsewhere.
- You should not be pressured to buy goods or services from a school or kura **but if you agree to buy a good or service, you must pay for it.**
- If your child is involved in weekend sports teams or after hours cultural activities (extra-curricular activities), these are optional. If you choose for your child to participate, you may be asked to cover the costs of these activities.
- You can make a voluntary donation to your school or kura at any time and if you choose to do this, GST is not payable on the donation and you can claim a tax credit.

State integrated schools/kura attendance dues

- State integrated schools, and kura that are state integrated, have the same core learning programme as other schools and kura (the New Zealand Curriculum) but also their own special character (usually a philosophical or religious belief).
- You must pay attendance dues to the proprietor of a state integrated school or kura to cover the cost of property-related matters – they are compulsory.
- Attendance dues cannot be increased without the approval of the Minister of Education.



Donations are voluntary, no matter who asks for them.

You never have to make a donation to your school or kura but you can give any size donation any time if you want to. If your school or kura decides to opt in to the donations scheme, it cannot ask you for any donations except for overnight camps.

If you have questions regarding payments contact your board of trustees or your local Ministry office. You can also email any questions to school.donations@education.govt.nz